

File Formats

.ICF radio files

The .ICF files for the relevant radios can be **Opened** in the programming software or copied to an SD card for directly loading into the radio. These files contain all the required information to program the radio except your call sign.

.CSV Files

The CSV files can be edited in a spreadsheet program if you require a custom list or directly imported into the programming software by using "Import" into the "Memory Channels" and/or "Repeater List" sections.

The .ICF files are updated regularly from the data supplied by www.ukrepeaters.net

The ICF files for the ID 51(plus), 5100 and 7100 contain all UK Analogue, D-Star Repeaters and Nodes plus a selection of D-Star repeaters from around the world.

The ID-7100 CSV file also contains the licensed 10, 6 and 4 Metre repeaters and nodes.

Download the files you require to your PC from Icom UK's **d-staruk.co.uk** website.

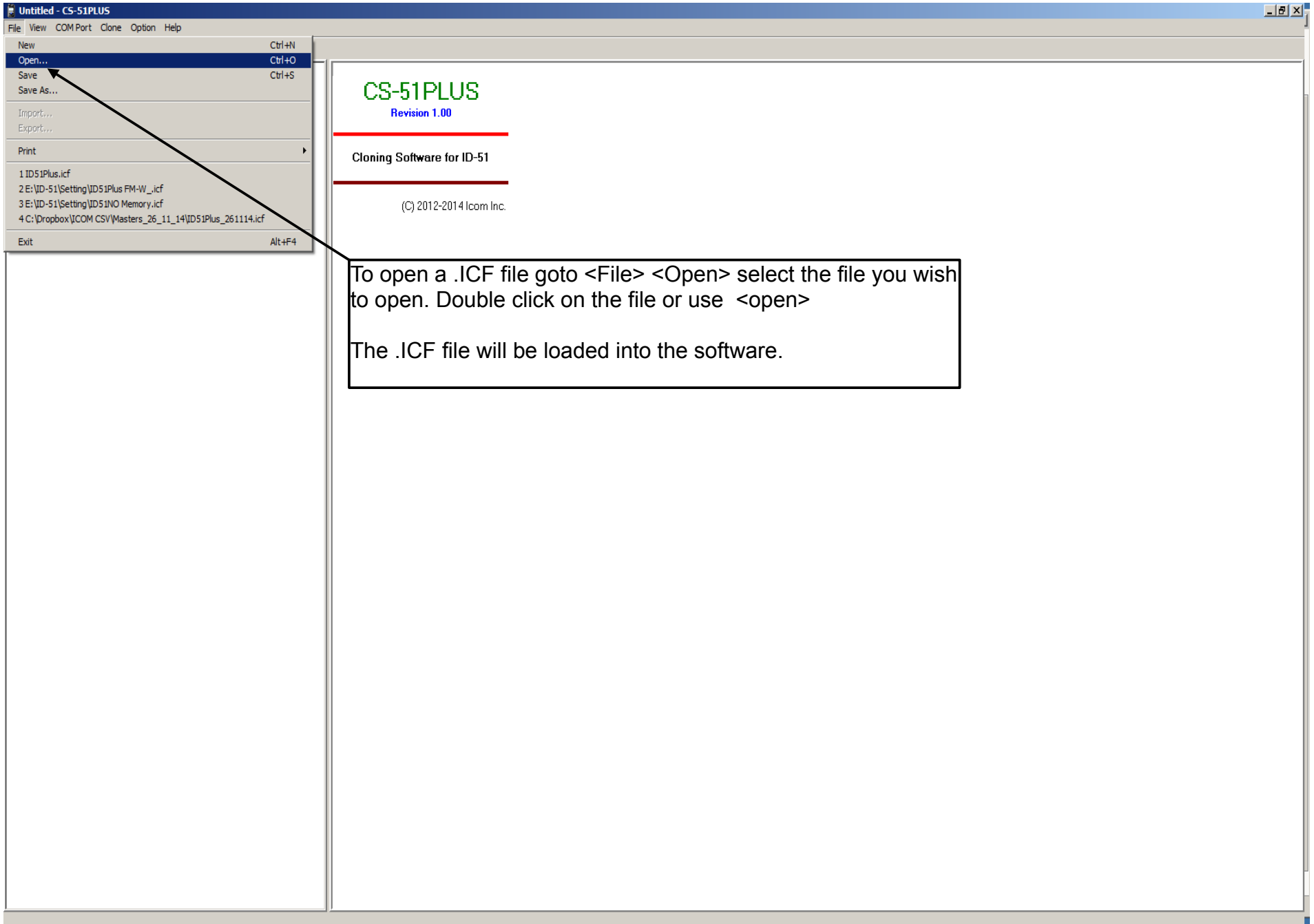
Remember... You can not open a .CSV file in the programming software you must Import it into the required section.

The example below can be used for the ID-5100 and ID-51 (and Plus). For ID-7100 see the last page.

Useful Links:

Icom UK YouTube channel, D-Star Procedures and Programming:

<https://www.youtube.com/playlist?list=PLGgz6wUvksVtnSTiVi3zPHc70cx2p0MrN>



To open a .ICF file goto <File> <Open> select the file you wish to open. Double click on the file or use <open>

The .ICF file will be loaded into the software.

ID51Plus.icf - CS-51PLUS

File View COM Port Clone Option Help

ID-51

- Memory CH
 - All
 - 0 - 99
 - 100 - 199
 - 200 - 299
 - 300 - 399
 - 400 - 499
 - Program Scan Edge
 - Scan Name
 - Bank CH
 - Bank Name
 - A: UHF_RPT - A to K**
 - B: UHF_RPT - L to Z
 - C: VHF_RPT - A to K
 - D: VHF_RPT - K to Z
 - E:
 - F:
 - G:
 - H:
 - I:
 - J:
 - K:
 - L:
 - M:
 - N:
 - O:
 - P:
 - Q:
 - R:
 - S:
 - T:
 - U:
 - V:
 - W:
 - X:
 - Y:
 - Z:
 - CALL CH
 - Program Scan Link

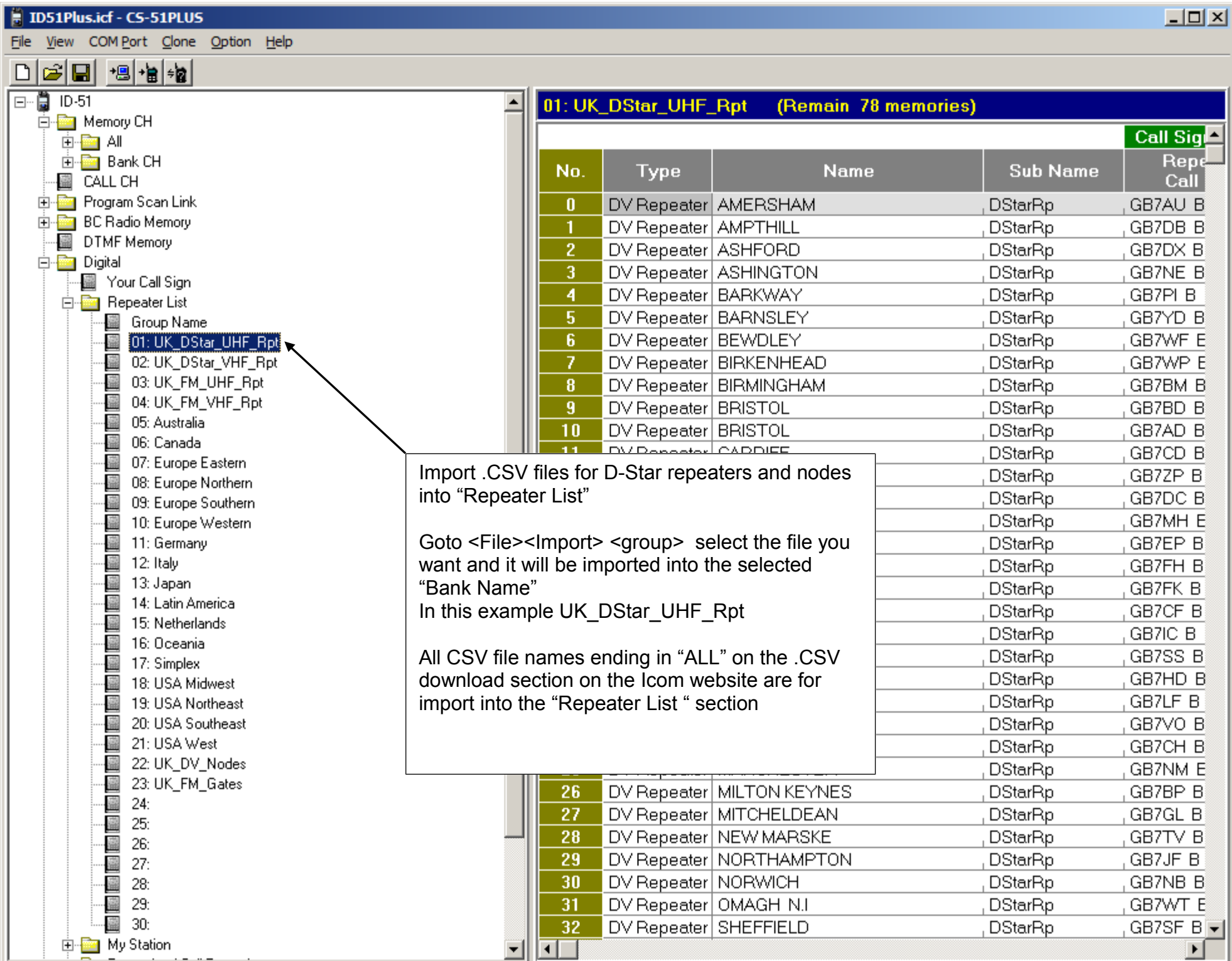
A: UHF_RPT - A to K (Remain 230 CH)

Frequency							
CH	CH Select	Operating Freq	DUP	Offset Freq	TS	Mode	Name
0							
1	2	430.980000	+DUP	7.600000	25k	FM-N	GB3AC-LYDNEY GLO
2	3	433.270000	+DUP	1.600000	25k	FM-N	GB3AH-EAST DEREH
3	4	433.200000	+DUP	1.600000	25k	FM-N	GB3AN-AMLWCH
4	5	433.180000	+DUP	1.600000	25k	FM-N	GB3AU-AMERSHAM
5	6	433.050000	+DUP	1.600000	25k	FM-N	GB3AV-AYLESBURY
6	7	433.250000	+DUP	1.600000	25k	FM-N	GB3AW-NEWBURY
7	8	430.860000	+DUP	7.600000	25k	FM-N	GB3BE-DUNS
8	9	433.180000	+DUP	1.600000	25k	FM-N	GB3BL-BEDFORD
9	10	433.000000	+DUP	1.600000	25k	FM-N	GB3BN-BRACKNELL
10	11	433.150000	+DUP	1.600000	25k	FM-N	GB3BR-BRIGHTON
				JP, 7.600000	25k	FM-N	GB3BS-BRISTOL CI
				JP, 1.600000	25k	FM-N	GB3BV-HEMEL HEMP
				JP, 7.600000	25k	FM-N	GB3BZ-BRAINTREE
				JP, 1.600000	25k	FM-N	GB3CA-CARLISLE
				JP, 1.600000	25k	FM-N	GB3CB-BIRMINGHAM
				JP, 7.600000	25k	FM-N	GB3CC-CHICHESTER
				JP, 1.600000	25k	FM-N	GB3CE-COLCHESTER
				JP, 1.600000	25k	FM-N	GB3CH-LISKEARD
				JP, 1.600000	25k	FM-N	GB3CI-CORBY
				JP, 1.600000	25k	FM-N	GB3CK-CHARING KE
21	22	433.230000	+DUP	1.600000	25k	FM-N	GB3CL-CLACTON
22	23	433.200000	+DUP	1.600000	25k	FM-N	GB3CM-CARMARTHEN
23	24	433.150000	+DUP	1.600000	25k	FM-N	GB3CR-CAERGWRIE
24	25	433.230000	+DUP	1.600000	25k	FM-N	GB3CV-COVENTRY
25	26	433.100000	+DUP	1.600000	25k	FM-N	GB3CW-NEWTOWN PO
26	27	433.250000	+DUP	1.600000	25k	FM-N	GB3DD-DUNDEE
27	28	433.180000	+DUP	1.600000	25k	FM-N	GB3DE-IPSWICH
28	29	433.150000	+DUP	1.600000	25k	FM-N	GB3DH-DIDCOT
29	30	430.930000	+DUP	7.600000	25k	FM-N	GB3DM-DUMRARTON

Import .CSV files for analogue repeaters and nodes into "Bank CH" You can create a name for the bank in "Bank Name"

Goto <File><Import> select the file you want and it will be imported into the selected "Bank Name"

In this example UHF_RPT - A to K



IC-7100

File View COM Port Clone Option Help

IC-7100

- Memory CH
 - A01 - A99
 - B01 - B99
 - C01 - C99
 - D01 - D99
 - E01 - E99
 - Program Scan Edge
- CALL CH
- DTMF Memory
- DR Mode
- Digital
 - Your Call Sign
 - Repeater List
 - Group Name
 - 01: UK_DStar_UHF_Rpt
 - 02: UK_DStar_VHF_Rpt
 - 03: Australia
 - 04: Canada
 - 05: Europe Eastern
 - 06: Europe Northern
 - 07: Europe Southern
 - 08: Europe Western
 - 09: Germany
 - 10: Italy
 - 11: Japan
 - 12: Latin America
 - 13: Netherlands
 - 14: Oceania
 - 15: UK_DV_Nodes
 - 16: USA Midwest
 - 17: USA Northeast
 - 18: USA Southeast
 - 19: USA West
 - 20: Simplex
 - 21:
 - 22:
 - 23:
 - 24:

Memory CH

CH	Name	SEL	Split	Operating Freq	DUP
A01	GB3AC-LYDNEY GLO			430.980000	+DUP
A02	GB3AH-EAST DEREH			433.270000	+DUP
A03	GB3AN-AMLWCH			433.200000	+DUP
				433.180000	+DUP
				433.050000	+DUP
				433.250000	+DUP
				430.860000	+DUP
				433.180000	+DUP
				433.000000	+DUP
				433.150000	+DUP
A11	GB3BS-BRISTOL CI			430.850000	+DUP
A12	GB3BV-HEMEL HEMP			433.020000	+DUP
A13	GB3BZ-BRAINTREE			430.850000	+DUP
				33.320000	+DUP
				33.350000	+DUP
				30.960000	+DUP
				33.350000	+DUP
				33.050000	+DUP
				33.050000	+DUP
				33.000000	+DUP
				33.230000	+DUP
				33.200000	+DUP
A23	GB3CR-CAERGWRIE			433.150000	+DUP

Import .CSV files for analogue repeaters and nodes into "Memory CH"
Goto <File><Import> select the file you want and it will be imported into the selected memory channels

Import .CSV files for D-Star repeaters and nodes into "Repeater List"
Goto <File><Import> <group> select the file you want and it will be imported into the selected "Bank Name"
In this example UK_DStar_UHF_Rpt

All CSV file names ending in "ALL" on the .CSV download section on the Icom website are for import into the "Repeater List" section